

TScore



Installation Guide

Version 10

TScore *the complete Trampoline Competition package*

Contents

1	Introduction.....	3
2	Supported Platforms and Configurations	3
3	Concepts	4
4	Installation and First Use	5
4.1	Computer Requirements:.....	5
4.2	Installation Sequence	6
4.3	PostgreSQL Database Installation	7
4.3.1	<i>PostgreSQL SERVER Installation</i>	<i>7</i>
4.4	TScore Installation.....	10
5	Running TScore	11
6	Help!.....	11

1 Introduction

Welcome to the TScore Installation Guide. This manual will help you perform the initial installation of TScore and the PostgreSQL database that it uses.

The process should be quite straightforward, but occasionally can be upset by unusual network configurations or non-English versions of Windows. We can normally get it working though if you get stuck!

2 Supported Platforms and Configurations

TScore has been in use since 2008 on a wide range of Windows platforms – 2000, XP, Vista, 7, 8, 8.1 and 10.

It is currently developed and tested on Windows 10 and is in regular use on Windows XP, 7 and Vista.

It uses the highly respected PostgreSQL database – from version 8.3 onwards. We recommend version 9.5.4 or newer. (Note: Version 10 does seem to work ok, but there are some compatibility issues if you copy competition databases between versions.)

TScore can be run on the same computer as the database, or you can connect TScore to a database on another computer on the same local area network.

Note however that you should install all components on every computer you intend to use, as the PostgreSQL installer includes important Microsoft runtime libraries that may be missing from your Windows system.

In order to operate with full functionality, TScore needs a copy of MS Office installed on at least one of your computers. Specifically it uses Excel for entry forms and results, Word for certificates and Outlook for email notifications. It is possible to use TScore without these, but functionality will be quite restricted.

The good news is that TScore will work with even very old versions of Office, and it is possible to pick up Office 2007 for example extremely cheaply on eBay!

We have seen reports of some problems communicating with non-English versions of Office, but these are now rare. Be sure to check that your version of Office is activated, and that if Outlook is installed, you have taken it through its initialisation steps, or TScore will be blocked when it tries to access Outlook from the preferences screen.



At most competitions more than one computer is used to record scores – one per panel is normal. The computers are therefore networked together so they can share a single database in which all of the results are recorded. TScore just needs a TCP/IP connection to communicate with its database. Since a true database server is employed, network failures should not cause any more than a temporary interruption, rather than the database locking and corruption problems prevalent in other products that rely on file sharing to operate.

3 Concepts

TScore uses a SQL database server to record the entrants and scores for all of your competitions. Each competition is created in its own named database.

It is important to note however, that there is not necessarily a separate file on the server for each of these. To backup or copy a competition you must therefore use the 'Export' option to produce a file, then 'Import' it to another TScore system. Importing and Exporting the database can only be performed on computers that have the database server software installed, even if the database itself is on a remote computer.



TScore uses a PostgreSQL database, which is freely available and requires no additional licensing. It is best to use the version that has been tested with TScore although others may work. Installing the database tends to be the most complex part of the setup unfortunately, but if you get stuck we can run a remote online support session to fix most problems. TScore will automatically check for versions 8.3, 9.2 – 9.7 and 10.

Scoring updates the database server directly when you click the 'Save' button for each competitor. When you start scoring a competitor, their current scores are read from the database.



There is currently no record locking, as the same athlete is not expected to be competing on more than one panel at the same time. This does mean that if two computers should attempt to record scores for the same competitor at the same time, the values entered by the last one will overwrite the values of the first one, (as you would expect).

Competition entry forms are in Excel format and designed to be simple to use. This means that they are quite complex internally, as age groups and other clever picklists need a few cunning expressions to make them work smoothly for the person filling them in. For this reason, the worksheets are 'locked' for those parts that should require no changes. If you need to unlock them, the password is 'barani', but you should ensure the password lock is reset before sending the forms out to clubs, or they will come back unintentionally trashed!

You can also import lists of athletes from simple text files in 'csv' format. See the user guide for details.

Competition documents are produced in Excel format - this includes the timetable, programme, checklists and results.

Certificates are generated in Word format.

The presentation of Checklists and Results can be changed by altering their associated Excel templates. This means that you can change colours, column widths, images, text fonts and sizes if you feel so inclined. You must however preserve the rows and columns as they are defined in the templates.

4 Installation and First Use

4.1 Computer Requirements:

TScore is designed to run on Windows PCs. It has been tested on Windows XP, Vista, Windows 7, 8.1 and 10. Pretty well any PC built since 2003 should cope with it! Current development is on Windows 10, with occasional testing on Vista and Windows 7.

IMPORTANT!

You **must** have a copy of Excel installed on your PC for many of the features; in particular, entry processing, timetabling and exporting. Excel 2010 is now used for most of the testing, though older versions should also work (if a little slower). Excel 2016 is ok too but has not been tested by the author.

To print Certificates you will need Word. This has been tested with Word 2003, 2007 and 2010.

To send emails you will need Outlook. This feature has been tested with Outlook 2007 and 2010. Some changes to your security settings in Outlook may be necessary to allow programmatic control.

Most of the computers at a competition will not need MS Office, unless they are printing or exporting results. Cheap copies of older Office versions can be obtained on eBay!



At most competitions more than one computer is used to record scores – one per panel is normal. The computers are therefore networked together so they can share a single database in which all of the results are recorded. TScore just needs a TCP/IP connection to communicate with its database. Since a true database server is employed, network failures should not cause any more than a temporary interruption, rather than the database locking and corruption problems prevalent in other products that rely on file sharing to operate.

4.2 Installation Sequence

The recommended sequence of installations is:

1. PostgreSQL Server
2. TScore / VScore (combined installer)

Note that earlier versions of TScore relied on a third component, the PostgreSQL Client Connector.

This is no longer necessary.

4.3 PostgreSQL Database Installation

You must install Server program on your 'master' database server. It is worth installing it on the other computers too, so these can be used directly in the event of hardware or network failure.

IMPORTANT FOR INSTALLING POSTGRESQL:

You **MUST** install PostgreSQL to a folder other than one in "C:\Program Files" or your desktop. See the separate document on 'Troubleshooting PostgreSQL on Vista' for details.

We recommend creating a folder called 'C:\Postgres' for the sake of consistency.

TScore should work with most versions of PostgreSQL, but testing has been performed primarily on versions: 9.6.1 and 10.1. We recommend 9.6.1 for now, so the installation screens below relate to that.

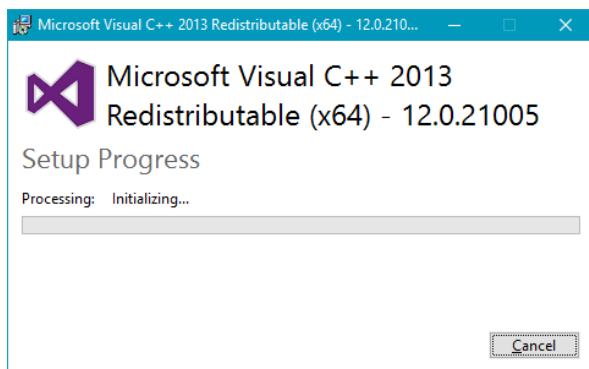
4.3.1 PostgreSQL SERVER Installation

Run **postgresql-9.6.1-1-windows.exe**

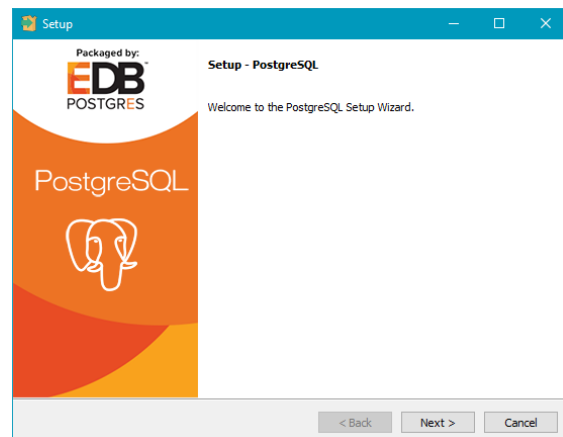
or **postgresql-9.6.1-1-windows-x64.exe**

according to whether you have a 32-bit or 64-bit version of Windows.

You may see this installer first – this is needed to install some Microsoft runtime components.

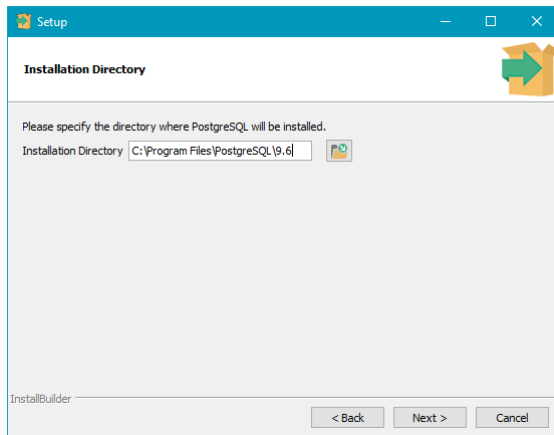


Then you see the actual PostgreSQL installer:



Click Next

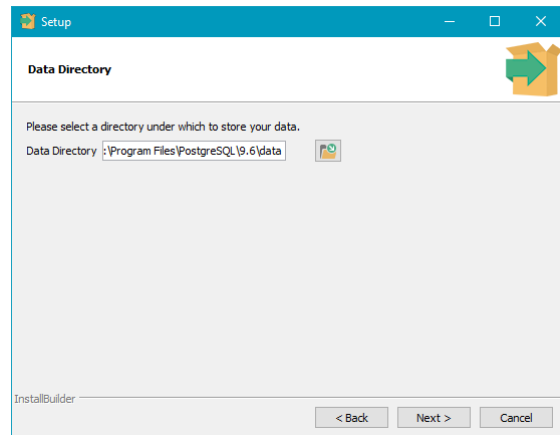
1



Choose the directory to install the database program.
Do NOT to use the default location set in the installer.
Use a folder somewhere other than in “Program Files”.
We suggest C:\Postgres (or another drive).

Click Next

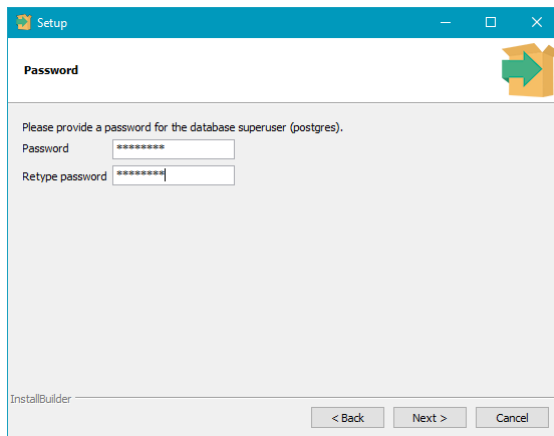
2



Set the location for the competition data files. These are best in a folder below your installation folder.

Click Next

3

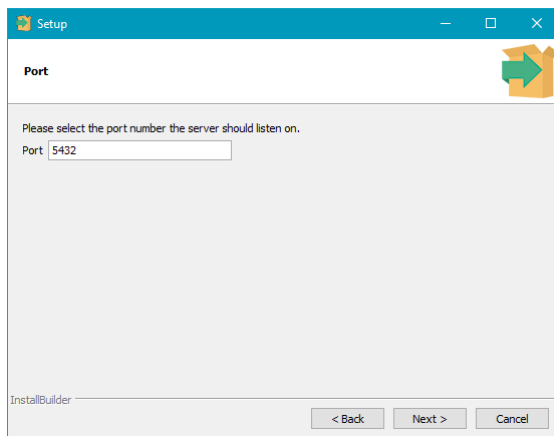


Use **postgres** as the password

(You can use others, but will then have to configure the setting in TScore when you run that). .

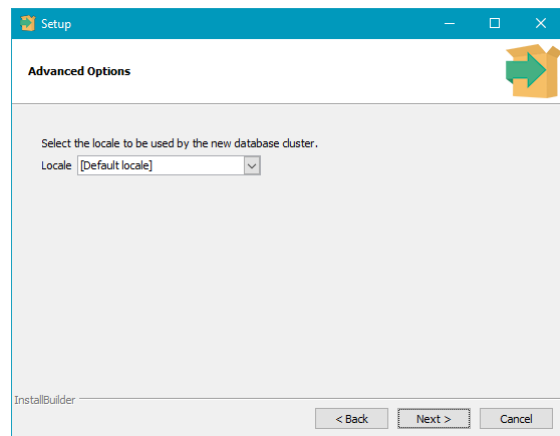
Click Next

4



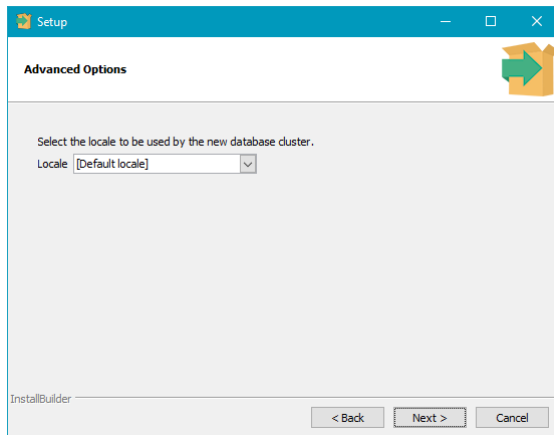
Leave this at the default value – 5432

5

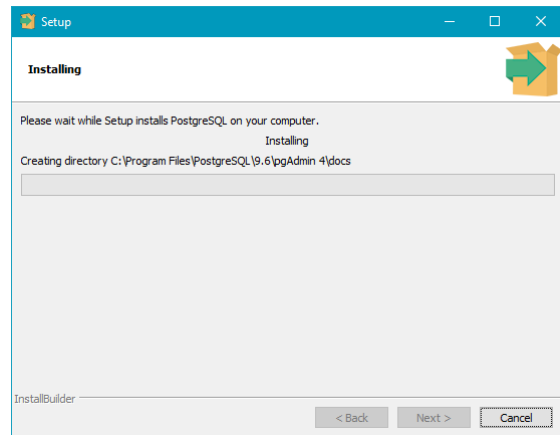


Leave this at the default

6

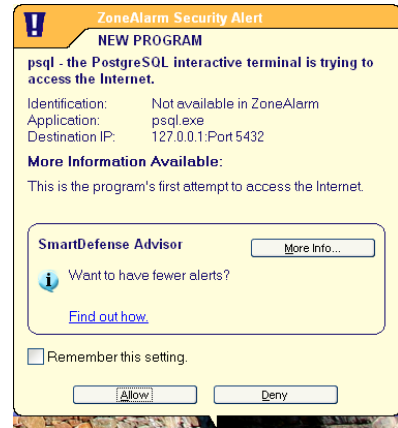
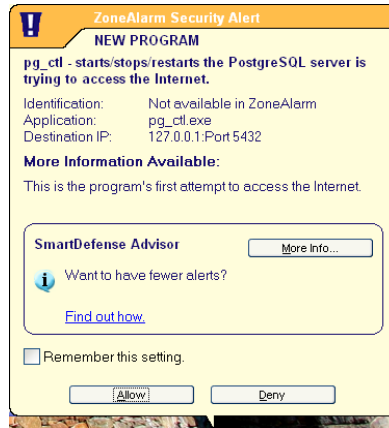
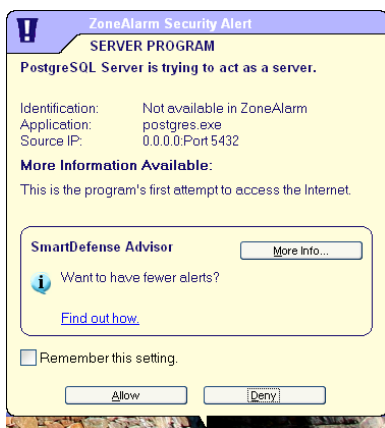


7

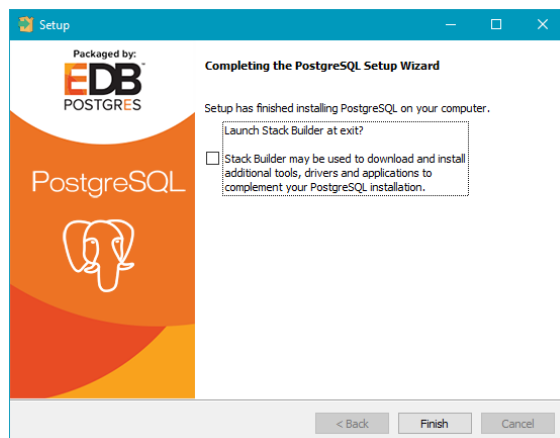


8

During installation, you may get warnings from your firewall (screens will vary depending on what firewall you have installed). You must allow network access for the Postgres services (port 5432).



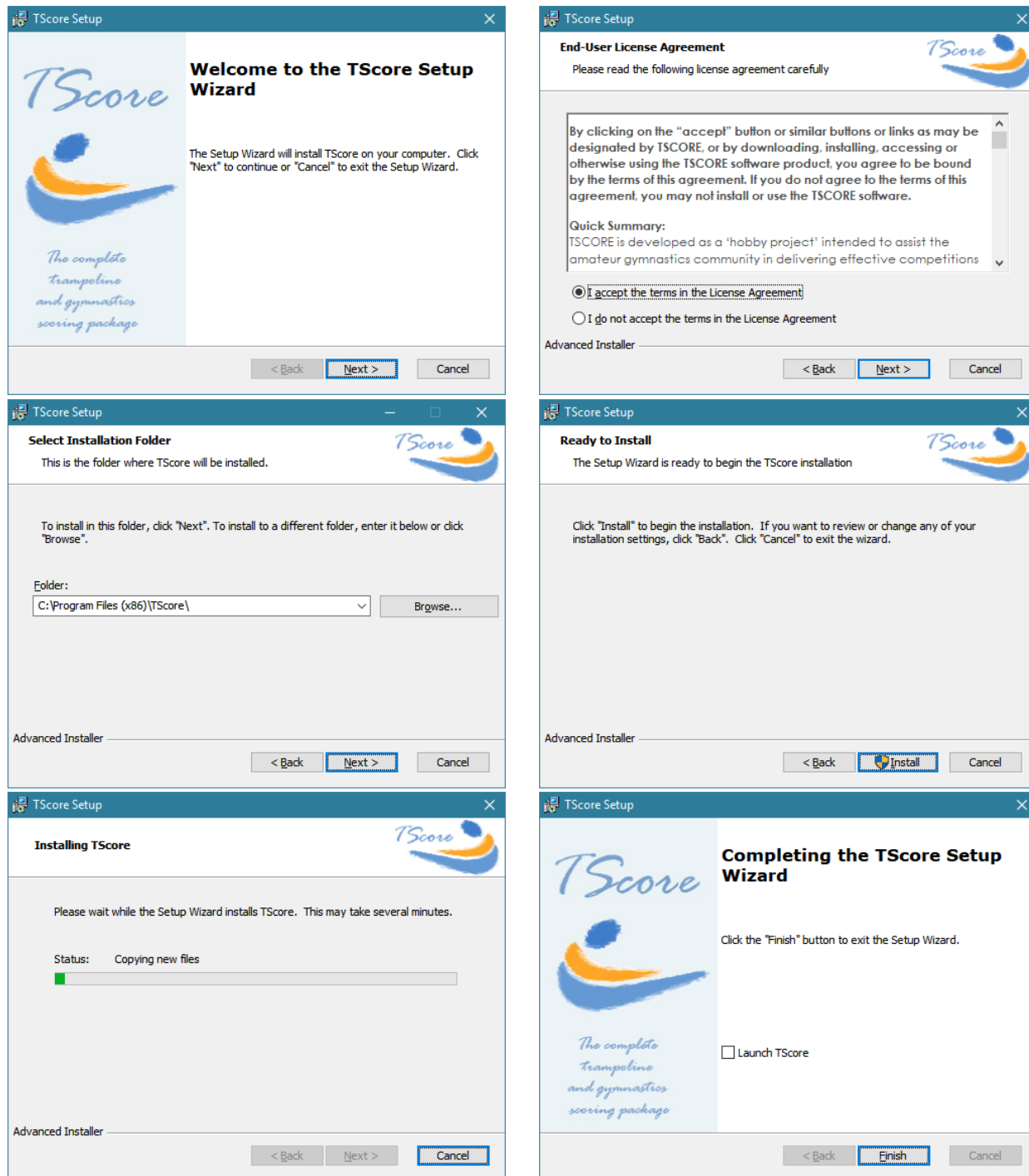
9



UNCHECK 'Launch Stack Builder' and click Finish
(You don't need any of the additional tools it offers)

4.4 TScore Installation

Installing TScore should be simple – just run 'setup.exe' and follow the instructions on screen. However, you will have to install a database before you can use TScore – see the PostgreSQL installation section later in this document for information on this. Here are the screens you'll see during installation.



5 Running TScore

You should now be able to launch TScore and VScore from the desktop or Start Menu.

When it runs, TScore may ask you for a licence string. If it does, please email the request to support@tscore.co.uk and we will get you up and running as soon as possible. Some versions of TScore have a built-in evaluation licence, in which case you will not need to provide it.

If Tscore is not able to connect to the database when it runs it will present a message telling you and advising certain steps to take. If these don't work, just contact support and we can investigate.

If TScore finds that your database has no competitions in it, it will offer to install some demonstration events – these are worth having to get you started on using TScore.

6 Help!

If you need any further help or advice, please visit the TScore website <http://tscore.co.uk> for the latest information and updates. We now have a TScore User Forum and Knowledge Base, which should be your first port of call for troubleshooting.

If you can't find an answer there, you may also email support@tscore.co.uk